

**WEDGE**

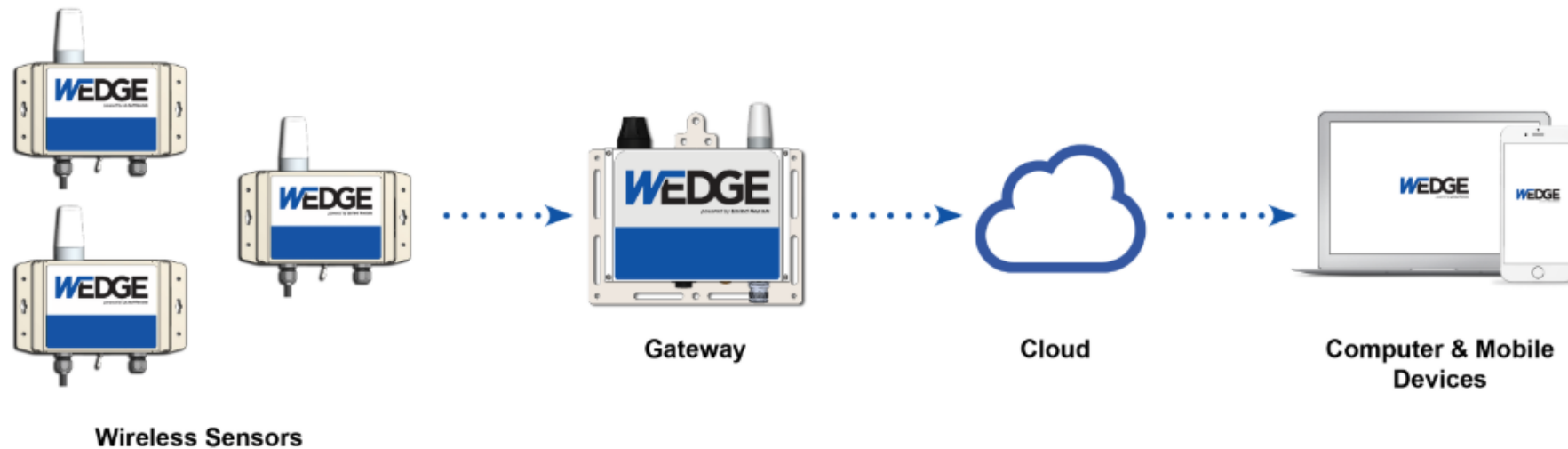
Concrete Presentation

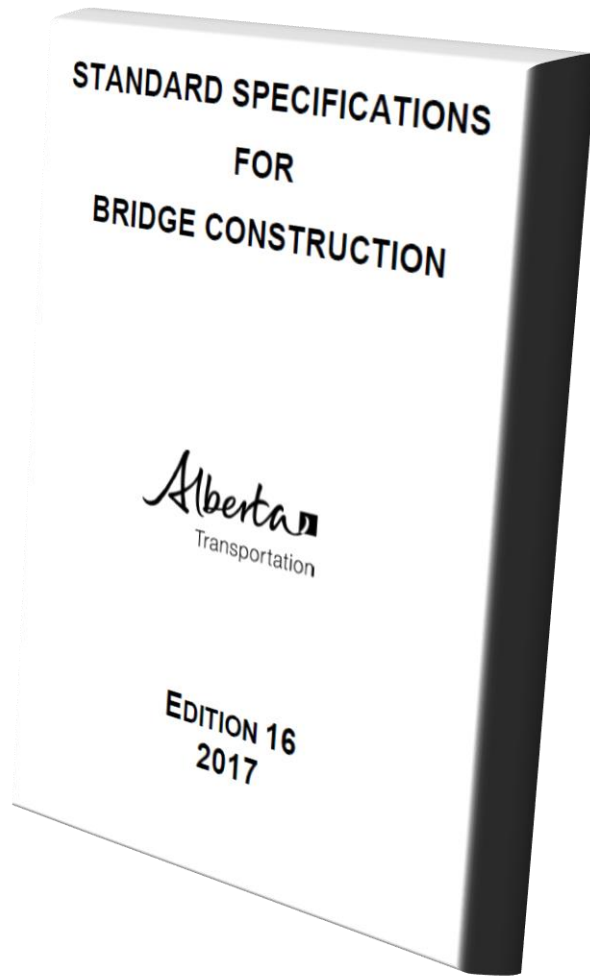
# About WEDGE

WEDGE is a remote monitoring system developed by United Rentals that provides 24/7 visibility for construction sites to monitor on-site conditions such as temperature or humidity.

Each Wireless Sensor measures and sends measurements to the Gateway, which saves the measurements to the Cloud. Measurements are available in the WEDGE Dashboard when using a computer or mobile device.

If thresholds exceed pre-set levels, the system sends alerts to site team members.

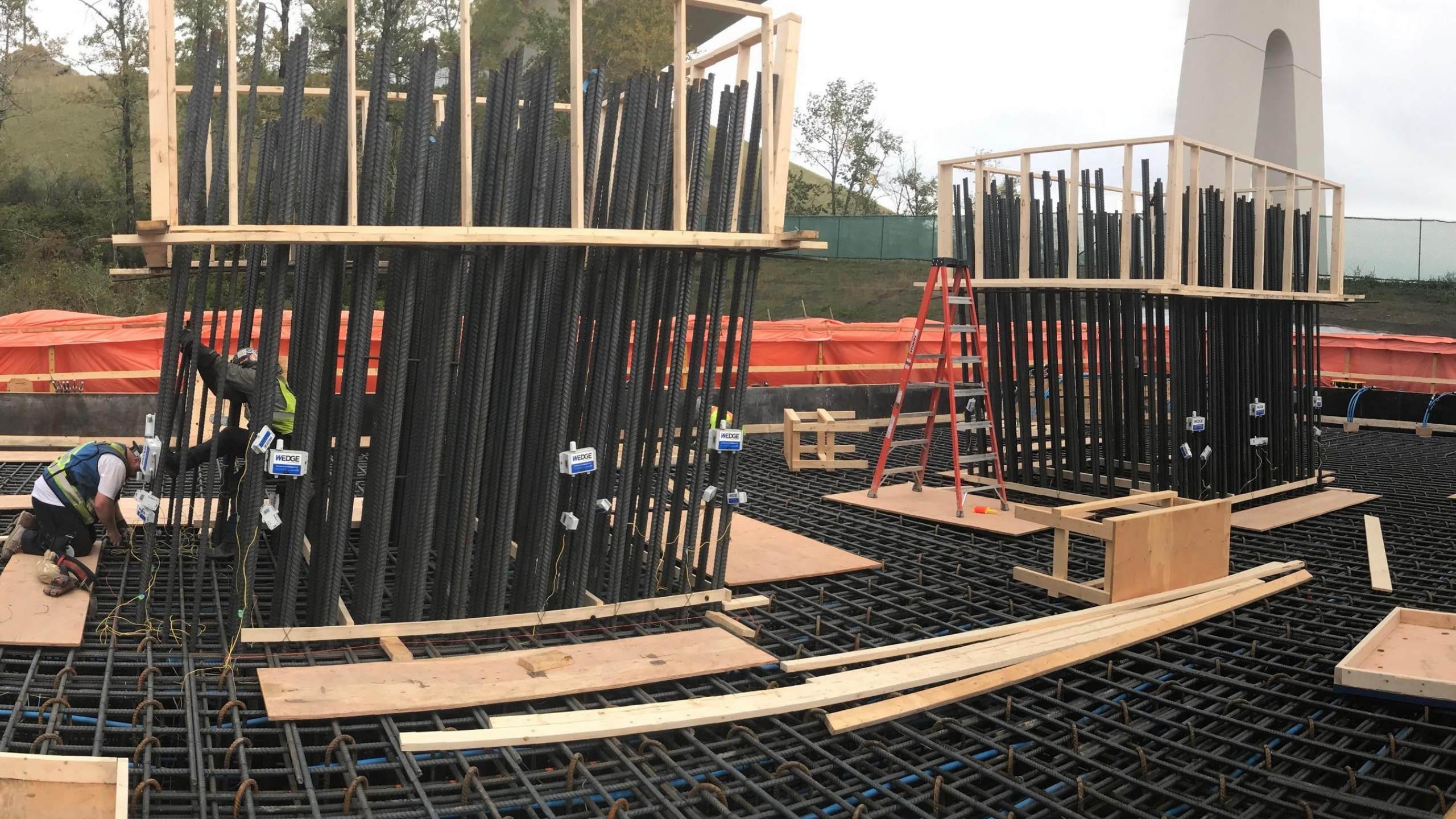




- **For every 50 m<sup>3</sup> = Core & Surface measurement point is required**
- **For every 100 m<sup>2</sup> of Deck Slab = 2 Thermocouple measurement points are required**
- **Customer must adequately preheat forms/substructure = 10-20°C**
- **Concrete temperature must be regulated between 10-70°C**

Based on Alberta Transportation Requirements

**Transportation Requirements – Civil Construction**





“Ability for remote visibility after hours during critical periods of time after concrete has been poured”

“Peace of mind that we are meeting Alberta Transportation Specifications. “

“Thermostatically controlling our rented heaters on site is reducing on labor & fuel consumption.”

“Simple, Intuitive User Interface for us”

**Customer Feedback**

*Spend less time on **downloading data.***

**WEDGE**

*wedge.ur.com*

*powered by **United Rentals***



# SmartHeater Pilot

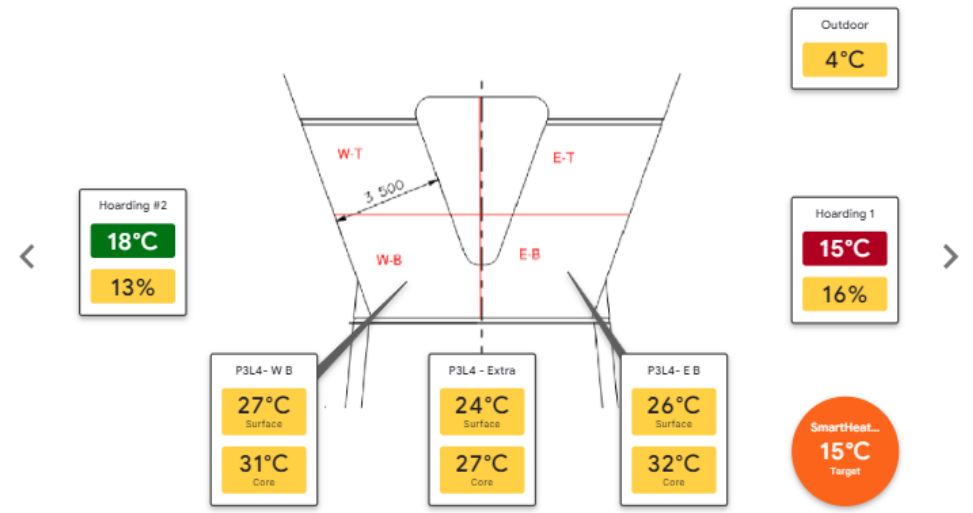






- Floorplans 2
- Thresholds 1
- Locations 12
- Controllers 1
- Devices 14
- Team 10
  
- Reports
- Settings

Floorplan P3L4 ▾



SmartHeater ×

Warming up  
**15°C**  
Target

---

Duty Cycle ON

---

Stack 7.6°C

“WEDGE™ ensures temperature and humidity levels are where they should be. We can rest assured knowing that we have the proper heat under the slab.”

*“WEDGE™ gives us a level of comfort that the site temperatures are controlled adequately and continuously during extreme weather conditions to ensure uniform and reliable curing of concrete.”*

**Garth Babcock**, Site Superintendent, APG Construction

# Forced Water Induction - Cooling





*Spend less time on **checking jobsites.***

**WEDGE**

*wedge.ur.com*

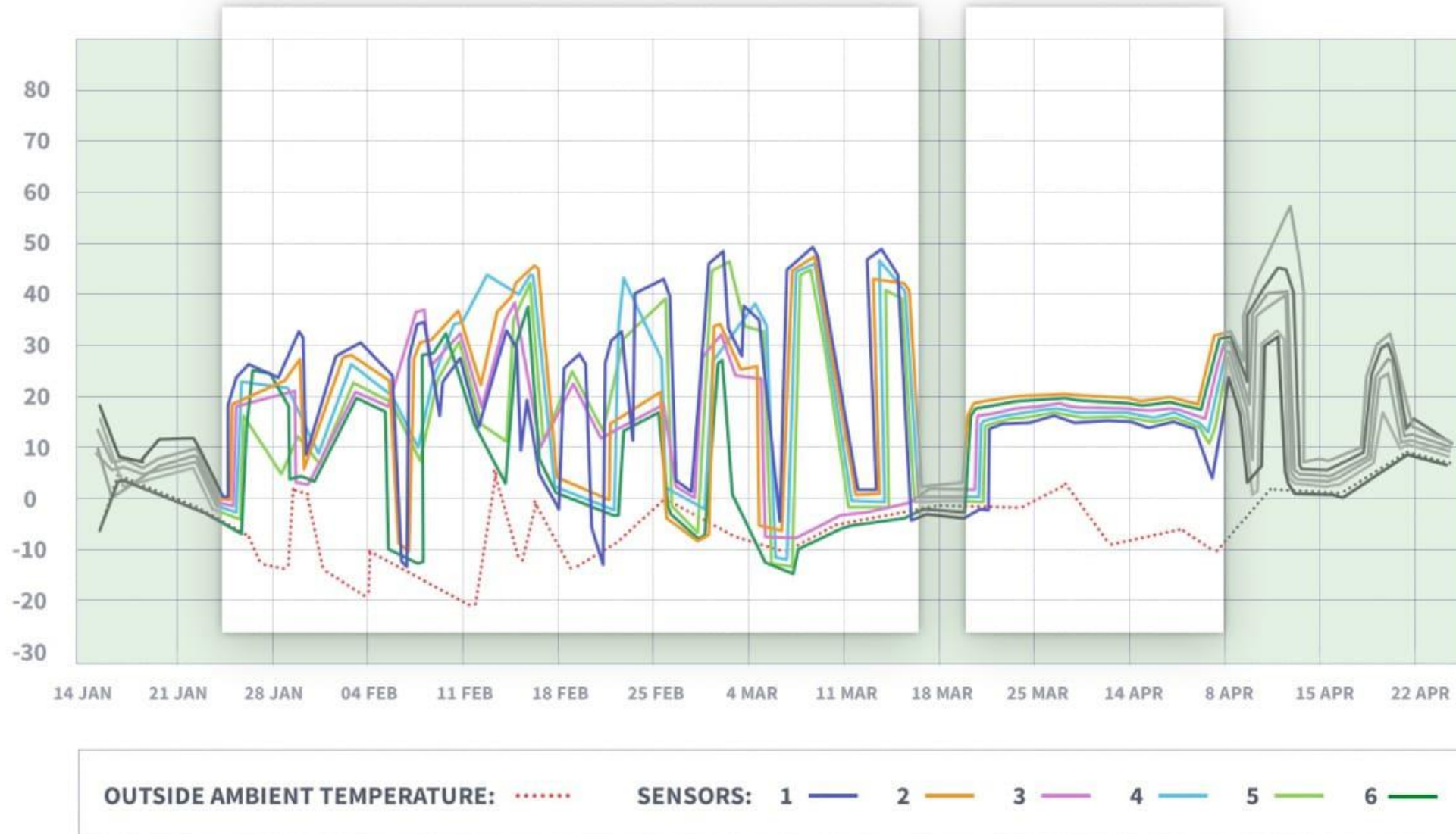
*powered by **United Rentals***

WEDGE™ allows me to be off-site enjoying time with my family while still being able to check in on my site thresholds remotely giving me peace-of-mind.

- Satisfied Customer

WEDGE™ at site, not being utilized

WEDGE™ being utilized at site

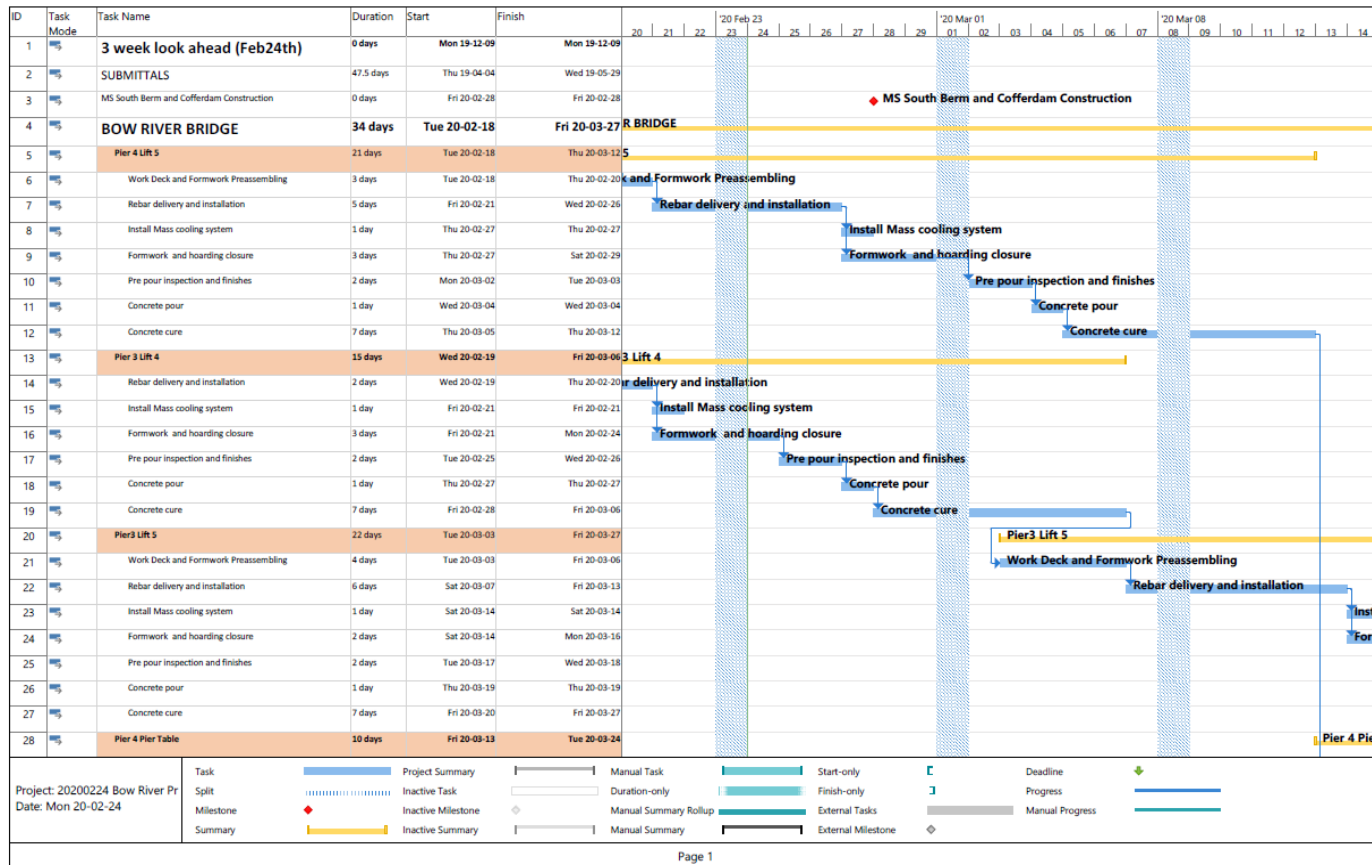




*“The WEDGE™ dashboard provides information that helps us know when to manually adjust heaters and fans to achieve our target temperature. It has saved us considerable money on fuel”*

Doug Hunter, Site Superintendent – HESTIA Construction

# Project Schedule – Where UR Fits In



- 3 week look ahead – proactive planning for UR
- Involved with Customer site team on a weekly basis
- Inspecting equipment & Communicating next phase of construction